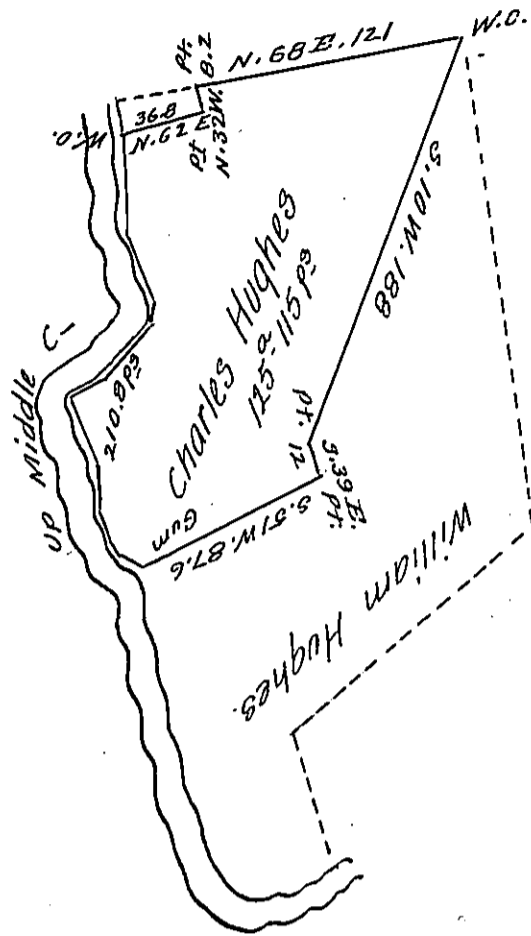


Adam Gantz



Courses & Distances
Up Middle Creek.

- N. 62 W. 12.8
- N. 42 W. 8
- N. 30 W. 14
- N. 20 W. 20
- N. 35 W. 30
- N. 50 E. 14
- N. 31 E. 30
- N. 4 W. 10
- N. 31 W. 26
- N. 15 W. 46
- 210.8 P^s

Situate in Penn^a township Union County surveyed the 3^d day of April Anno Dom 1830 for Charles Hughes containing one hundred & twenty five acres & one hundred & fifteen perches with the usual allowance of six Pr. Cent &c. It being part of a survey or tract of two hundred & forty acres of land surveyed by the proper authority the 9th day of July Anno Dom. 1755. for Henry Newford alias Nufer in pursuance of his Warrant bearing date the 13th day of February Anno-Dom. 1755.

Pr. Jno Hayes D.S.

Jacob Spangler

To ~~Gabriel Heister Esq.~~
Surveyor General Penn^a

IN TESTIMONY that the above is a copy of the original remaining on file in the Department of Internal Affairs of Pennsylvania, made conformably to an Act of Assembly approved the 16th day of February, 1833, I have hereunto set my Hand and caused the Seal of said Department to be affixed at Harrisburg, this twenty-sixth day of April 1906.

Laack Brown
Secretary of Internal Affairs.